





While you get ready  
for a new year,



We'll take care of  
school readiness.

## Our Quality Kindergarten & Preschool Program

- Early Childhood Teachers
  - Long day care hours
  - Meals included
  - Child Care Subsidy Applies
- 



Our program provides the added bonus of accessing a government approved kindergarten or preschool program within a long day care setting so working Australian families have access to flexible, extended hours of care. This means greater convenience for you, plus access to a quality early learning program.

# Contents

Benefits of Kindergarten	4
Children as confident learners	5
What will my child learn?	6
Our Program	8
Our People	10
Partnering with our families	11
Frequently Asked Questions	12
Notes	13



“Play is the  
highest form of  
research”

ALBERT EINSTEIN

# With 2021 just around the corner, it's never too late to enrol your child in our Kindergarten program to maximise their learning and development outcomes.

- ✔ Grow in confidence, developing a positive view of themselves as a learner
- ✔ Use language effectively to communicate ideas, feelings and needs
- ✔ Make friends and engage in group experiences where they cooperate with their friends
- ✔ Learn to look after their belongings
- ✔ Develop resilience and self-regulation through engaging in experiences that challenge them
- ✔ Develop literacy skills, creatively expressing ideas and feelings through art, music, story-telling and dramatic play
- ✔ Develop scientific and numeracy skills as they identify, explore, examine and questions to solve problems.

# Children as confident learners

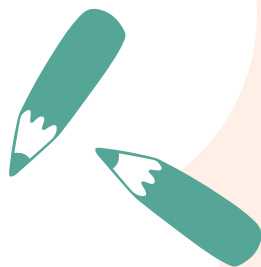
Children are learning from birth. The kindergarten or preschool year provides a play-based context for continued learning through which children make sense of the world as they engage actively with people, objects and spaces.

Key to children's learning is our high-quality, government approved kindergarten or preschool program. Developed by early childhood teachers, our program supports children to develop skills and character that enable them to experience success as a learner in the kindergarten/preschool year and beyond. Our purposeful and engaging kindergarten and preschool program is designed using the G8 Practice Statements. Our program builds on children's interests, embedding learning in literacy, numeracy, sustainability, the arts, and science, technology, engineering and mathematics (STEM).

## What are the G8 Practice Statements?

The G8 Education Practice Statements outline expectations around practice in our centres. The Practice Statements are underpinned by early childhood education research about how young children learn, the importance of play, and high quality approaches to education and care. They align with the Early Years Learning Framework and state-based learning frameworks.

# What will my child learn?



Our program is designed to encourage curiosity and creativity. Your child will learn to question, discover and problem-solve in a fun, safe and secure learning environment.

Research shows children are more likely to learn when they are engaged in an activity. A play-based program encourages active engagement in learning and supports a range of positive developmental outcomes including resilience and independence, curiosity and creativity.

Oral language is the basis for all literacy learning. A child's oral language ability is the best predictor for later success in learning to read and write. Hearing the sounds within a language is the first critical step for all literacy learning.

Our teachers support children's oral language development by engaging children in rich discussions, supporting children to communicate with each other, introducing new vocabulary as part of everyday conversations, modeling correct grammar and sentence structures, singing, playing games, and reading to children daily.

Throughout the kindergarten and preschool year and at school entry, children use language to share ideas, ask questions, express themselves, and connect with peers and adults in social settings.

Social-emotional skills including the ability to self-regulate one's emotions support children to experience success in group learning environments. Teachers support children's social and emotional development by labelling and talking about emotions and modelling appropriate responses as children engage in new and challenging situations.

All education and care settings in Australia use Belonging, Being, Becoming: The Early Years Learning Framework For Australia as a guide to developing their programs.

**Belonging:** Children belong first to a family, a cultural group, a neighbourhood and a wider community.

**Being:** Childhood is a time to be, to seek and make meaning of the world.

**Becoming:** Becoming reflects the process of rapid and significant change that occurs in the early years as young children learn and grow.

The Practices, Principles and Learning Outcomes from the Framework are embedded in our kindergarten and preschool programs. Our program will provide children with opportunities to learn how to:

- Use language effectively to communicate ideas, feelings and needs
- Make friends and cooperate with other children
- Become more independent and confident in their abilities
- Develop self-regulation
- Creatively express ideas and feelings through art, dance and dramatic play
- Identify, explore and solve problems
- Develop literacy and numeracy skills

State-based learning guidelines for kindergarten or preschool are also used in some states with a continued focus on play-based learning (The QKLG in QLD and the VEYLDFY in VIC).

**Play-based learning is a context for learning through which children organise and make sense of their social worlds, as they actively engage with people, objects and representations**

(Early Years Learning Framework)







# Our Program

A play-based learning approach has been adopted to ensure we create curious and confident learners.

We use a wide variety of play-based learning experiences to provide your child with the opportunity to explore, question, experiment and evaluate. Play-based experiences for key learning areas are listed on the next page.





- NUMERACY**
- Recognising numerals and working with numbers
  - The attributes of shapes
  - Sorting and classifying familiar objects
  - Identifying patterns
  - Measurement

- SOCIAL AND EMOTIONAL DEVELOPMENT**
- Understanding and regulating emotions
  - Collaborating with peers
  - Developing friendships
  - Developing empathy
  - Resolving conflict

- LANGUAGE AND LITERACY**
- Oral language skills
  - Storytelling
  - Shared reading
  - Rhythm and rhyme
  - Drawing and emergent writing

**LAYING THE FOUNDATION FOR A SUCCESSFUL EDUCATIONAL JOURNEY**

- DISPOSITIONS FOR LEARNING**
- Curiosity
  - Resilience
  - Independence
  - Confidence
  - Persistence

- FAMILY AND COMMUNITY**
- Diversity
  - Partnerships and collaboration
  - Shared decision-making
  - Sustainability and stewardship

- STEM**
- Questioning and investigating
  - Hypothesising, testing and evaluating
  - Experimenting and constructing
  - Use of information technology

- CREATIVITY**
- Sensory exploration
  - Drama and role-play
  - Dance and rhythm
  - Music, melody and tempo
  - Art and design

# Our people

The quality of our program is underpinned by the quality of our people. We invest in our valued educators, teachers and leaders so they can nurture, empower and support your child on their learning journey.

Quality, ongoing professional development is an integral part of our teachers' registration process. This ensures they are up to date with research on how children learn best and apply contemporary teaching methods.

We know each child is an individual with unique talents, interests and experiences. Our teachers are passionate about their profession and truly want your child to succeed in discovering their identity as a learner as they develop lifelong learning skills.



**“Let the child be the scriptwriter, director and the actor in his own play”**

Magda Gerber

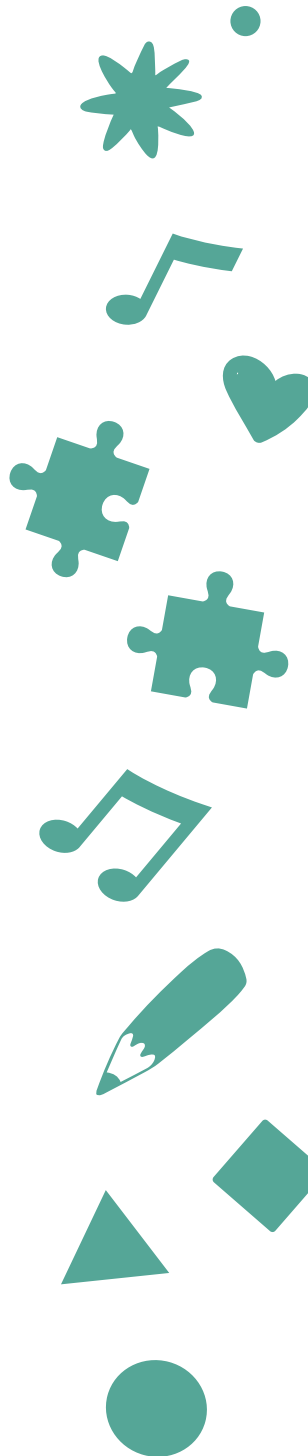
# Partnering with our families

Relationships are key to delivering the best possible learning opportunities for your child. We view their early childhood education as an extension of the learning occurring at home. That is why we want to support you to build on what we do each day.

We do this by keeping you informed about your child's learning outcomes and the experiences we provide in the learning environment. Our Child Care Management System, Xplor, provides a streamlined platform for parent communications and enables instant, secure access to your child's learning outcomes and day-to-day experiences. From here families can access photographs, drawings, observations and outcomes so that you can build upon what your child is learning at the centre into your daily routine at home.

We welcome your involvement in the kindergarten or preschool program. Involvement will look different for different families and could incorporate a range of experiences from extending your children's learning from centre to home, providing input and feedback on the curriculum, sharing knowledge and resources, or attending centre events.

Families are children's first teachers. Please share with us information about your child's interests, strengths and needs on a regular basis.



# Frequently asked questions

- Q:** How old does my child have to be to attend the kindergarten or preschool program?
- A:** While this varies from state to state, an approved kindergarten or preschool program is delivered in the year prior to starting primary school. In Victoria, a three-year-old kindergarten program will roll out over the next few years in selected regions.
- Q:** How is the kindergarten or preschool program different to the centre's other programs?
- A:** While all our programs align with the Early Years Learning Framework, the kindergarten or preschool program is designed using the G8 Practice Statements to further develop your child's interests, strengths and abilities. University educated, registered early childhood teachers deliver a developmentally appropriate program that caters to each child's specific learning outcomes.
- Q:** How do you assess children's learning and report this to parents?
- A:** Using our Xplor platform, teachers share photos and observations of your child engaged in learning. These are accessible to you in real time. At the end of the year, you will be provided with a transition statement you can take to the school your child will attend. This statement contains key information for your child's next teacher and supports them to get to know your child.
- Q:** Can my child enrol in a kindergarten or preschool program even if they have never been in an approved education and care centre before?
- A:** Yes! As long as your child meets the age requirements, they are able to attend. Research shows there are multiple benefits to children attending a government approved kindergarten or preschool program in the year prior to commencing school.
- Q:** How much Child Care Subsidy am I entitled to?
- A:** Kindergarten or preschool aged children are entitled to 36 subsidised hours per fortnight to attend a kindergarten or preschool program in an approved long day care service! No activity test requirements.  
Read more here [education.gov.au/child-care-subsidy](https://www.education.gov.au/child-care-subsidy)

# Kindergarten or Preschool readiness checklist



Choosing the right kindergarten or preschool program for your child can be an overwhelming task for parents. Here's a checklist to help choose the right centre for your child.

- Is the preschool or kindergarten program government approved and delivered by qualified early childhood teachers or an educator that is studying towards?
- Are the environments inviting with a range of resources such as blocks, special interest areas, art materials, puzzles and books?
- Is the program play-based with access to indoor and outdoor environments available all day?
- Is there an opportunity for children to be involved in art, dance and dramatic play?
- Does the program have literacy and numeracy embedded through play-based learning?
- Is the program aligned with the Early Years Learning **Framework**?


## Notes.

---

---

---

---

A photograph of a female teacher and a young student in a science laboratory. The teacher, on the left, is smiling and looking at the student. She is wearing a lab coat with 'LAB COATS' printed on it. The student, on the right, is looking at the teacher with an attentive expression. The background shows a typical lab setting with equipment and a whiteboard. A large white speech bubble is centered over the image, containing text. There are also several white decorative elements: a starburst above the bubble, a starburst to the right of the bubble, and a starburst below the bubble.

Our teachers are passionate about their profession and truly want your child to succeed in discovering their identity as a learner as they develop lifelong learning skills.

